



# CoreLine Waterproof – the clear choice for LED

## CoreLine Waterproof

Whether for a new building or renovation of an existing space, customers want lighting solutions that provide quality of light and substantial energy and maintenance savings. The new CoreLine Waterproof range of LED products can be used to replace traditional waterproof luminaires with fluorescent lamps. The process of selecting, installing and maintaining is so easy – it's a simple switch.

### Benefits

- Up to 50% energy savings compared with TL-D
- Reliable LED technology – maintenance-free
- Direct replacement for conventional waterproof luminaires in terms of light performance, installation flexibility and length

### Features

- Reliable integrated LED technology, ensuring maintenance-free installation and a long lifetime
- Can be used to replace traditional waterproof luminaires ranging from 18 to 58 W TL-D
- Wide-beam light distribution
- Diffuser with optical element ensures visual comfort
- Ceiling-mounted bracket and suspension hooks included; installation can be made vandal-proof by additional screw fixation of mounting brackets

### Application

- Parking garages
- Warehouses
- General lighting

### Specifications

## CoreLine Waterproof

<b>Type</b>	WT120C
<b>Light source</b>	LED module
<b>Power</b>	17 W (LED18S L600 version) 20 W (LED22S L1200 version) 38 W (LED40S L1200 version) 29 W (LED34S L1500 version) 57 W (LED60S L1500 version)
<b>Beam angle</b>	60°
<b>Luminous flux</b>	1800 lm (LED18S L600 version) 2200 lm (LED22S L1200 version) 4000 lm (LED40S L1200 version) 3400 lm (LED34S L1500 version) 6000 lm (LED60S L1500 version)
<b>Correlated Color Temperature</b>	4000 K
<b>Color Rendering Index</b>	≥ 80
<b>Median useful life L70B50</b>	50,000 hours
<b>Median useful life L80B50</b>	30,000 hours
<b>Median useful life L90B50</b>	15,000 hours
<b>Driver failure rate</b>	1% per 5000 hours
<b>Average ambient temperature</b>	+25 °C

<b>Operating temperature range</b>	-20 to +35 °C
<b>Driver</b>	Built-in, replaceable
<b>Mains voltage</b>	220-240V / 50-60 Hz
<b>Dimming</b>	DALI
<b>Material</b>	Housing: injection molded polycarbonate Diffuser: injection molded polycarbonate Closing clips: stainless spring steel
<b>Color</b>	Grey (RAL 7035)
<b>Optical cover</b>	Polycarbonate, clear with texture applied at the inside
<b>Connection</b>	Internal push-in connection with cable gland
<b>Maintenance</b>	No internal cleaning required
<b>Installation</b>	Fixation with ceiling mounted bracket Through-wiring possible Suspension possible After electrical installation in housing luminaire is closed by optical cover and closing clips
<b>Options</b>	Emergency lighting 3 hours duration
<b>Remarks</b>	All mounting accessories are included

## Versions



CoreLine Waterproof WT120C luminaire

## Product details



Stainless spring steel clips for fast closing of the luminaire

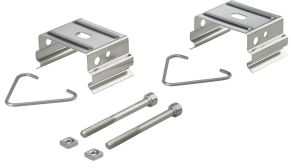


Electrical connection between LED driver and diffuser with integrated LED source

# CoreLine Waterproof

## Product details

Ceiling bracket and anti-vandal screws



Extra cable gland and stopper



Easy installation



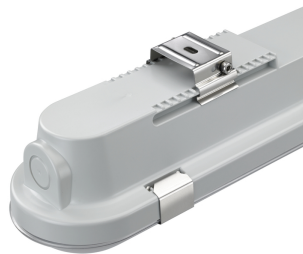
Easy installation



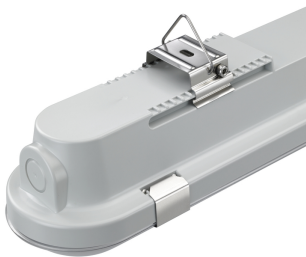
Easy installation



Ceiling bracket and anti-vandal screws



Ceiling bracket with suspension and anti-vandal screws



LED module integrated in the cover



# CoreLine Waterproof

## Product details

Side view



Front view



Close up anti-vandal screw



## Application Conditions

<b>Ambient temperature range</b>	0 to +25 °C
<b>Average ambient temperature</b>	25 °C
<b>Suitable for random switching</b>	Yes (relates to presence/movement detection and daylight harvesting)

## Approval and Application

<b>Mech. impact protection code</b>	IK08
<b>Ingress protection code</b>	IP65

## General Information

<b>Beam angle of light source</b>	120 °
<b>CE mark</b>	CE mark
<b>Color</b>	Gray
<b>Protection class IEC</b>	Safety class I
<b>Driver included</b>	Yes
<b>Flammability mark</b>	For mounting on normally flammable surfaces
<b>Light source replaceable</b>	No
<b>Number of gear units</b>	1 unit
<b>Number of light sources</b>	1 pc
<b>Optic type</b>	-
<b>Product Family Code</b>	WT120C
<b>UL mark</b>	-

## Initial Performance (IEC Compliant)

<b>Init. Corr. Color Temperature</b>	4000 K
<b>Init. Color Rendering Index</b>	80
<b>Luminous flux tolerance</b>	+/-10%

## Over Time Performance (IEC Compliant)

<b>Driver failure rate at 5000 h</b>	1 %
<b>Median useful life L80B50</b>	30000 h
<b>Median useful life L90B50</b>	15000 h

## Application Conditions

order code	Maximum dim level
910500453335	-
910500453336	-
910500453337	-
910500453338	-
910500453339	-
910500454298	-
910500454299	-
910500454301	-
910500454302	-
910500454303	-
910500454304	-
910500454305	-
910500454306	-
910500458243	1%
910500458244	1%
910500458245	1%
910500458246	1%
910500458247	1%
910500458248	1%
910500458249	1%
910500458250	1%
910500458251	1%
910500458794	-
910500458795	-
910500458796	-
910500458797	-

## Controls and Dimming

order code	Dimmable
910500453335	No
910500453336	No
910500453337	No
910500453338	No
910500453339	No
910500454298	No
910500454299	No
910500454301	No
910500454302	No
910500454303	No
910500454304	No

order code	Dimmable
910500454305	No
910500454306	No
910500458243	Yes
910500458244	Yes
910500458245	Yes
910500458246	Yes
910500458247	Yes
910500458248	Yes
910500458249	Yes
910500458250	Yes
910500458251	Yes

## CoreLine Waterproof

order code	Dimmable
910500458794	No
910500458795	No

order code	Dimmable
910500458796	No
910500458797	No

### Operating and Electrical

order code	Input Voltage
910500453335	220 to 240 V
910500453336	220 to 240 V
910500453337	220 to 240 V
910500453338	220 to 240 V
910500453339	220 to 240 V
910500454298	220 to 240 V
910500454299	220 to 240 V
910500454301	220 to 240 V
910500454302	220 to 240 V
910500454303	220 to 240 V
910500454304	220 to 240 V
910500454305	220 to 240 V
910500454306	220 to 240 V

order code	Input Voltage
910500458243	220 to 240 V
910500458244	220 to 240 V
910500458245	220 to 240 V
910500458246	220 to 240 V
910500458247	220 to 240 V
910500458248	220 to 240 V
910500458249	220 to 240 V
910500458250	220 to 240 V
910500458251	220 to 240 V
910500458794	220-240 V
910500458795	220-240 V
910500458796	220-240 V
910500458797	220-240 V

### General Information (1/2)

order code	Cap-Base	Optical cover/lens type	Emergency lighting	ENEC mark	Gear
910500453335	-	Polycarbonate bowl/cover	-	ENEC mark	-
910500453336	-	Polycarbonate bowl/cover	-	ENEC mark	-
910500453337	-	Polycarbonate bowl/cover	-	ENEC mark	-
910500453338	-	Polycarbonate bowl/cover	-	ENEC mark	-
910500453339	-	Polycarbonate bowl/cover	-	ENEC mark	-
910500454298	-	Polycarbonate bowl/cover	Emergency lighting 1 hour duration	ENEC mark	-
910500454299	-	Polycarbonate bowl/cover	Emergency lighting 1 hour duration	ENEC mark	-
910500454301	-	Polycarbonate bowl/cover	Emergency lighting 1 hour duration	ENEC mark	-
910500454302	-	Polycarbonate bowl/cover	Emergency lighting 1 hour duration	ENEC mark	-
910500454303	-	Polycarbonate bowl/cover	Emergency lighting 3 hours duration	ENEC mark	-
910500454304	-	Polycarbonate bowl/cover	Emergency lighting 3 hours duration	ENEC mark	-
910500454305	-	Polycarbonate bowl/cover	Emergency lighting 3 hours duration	ENEC mark	-

order code	Cap-Base	Optical cover/lens type	Emergency lighting	ENEC mark	Gear
910500454306	-	Polycarbonate bowl/cover	Emergency lighting 3 hours duration	ENEC mark	-
910500458243	-	Polycarbonate bowl/cover	-	-	-
910500458244	-	Polycarbonate bowl/cover	-	-	-
910500458245	-	Polycarbonate bowl/cover	-	-	-
910500458246	-	Polycarbonate bowl/cover	-	-	-
910500458247	-	Polycarbonate bowl/cover	-	-	-
910500458248	-	Polycarbonate bowl/cover	Emergency lighting 3 hours duration	-	-
910500458249	-	Polycarbonate bowl/cover	Emergency lighting 3 hours duration	-	-
910500458250	-	Polycarbonate bowl/cover	Emergency lighting 3 hours duration	-	-
910500458251	-	Polycarbonate bowl/cover	Emergency lighting 3 hours duration	-	-
910500458794	-	-	-	ENEC mark	-
910500458795	-	-	-	ENEC mark	-
910500458796	-	-	-	ENEC mark	-
910500458797	-	-	-	ENEC mark	-

### General Information (2/2)

## CoreLine Waterproof

order code	Glow-wire test	Lamp family code
910500453335	Temperature 850 °C, duration 30 s	LED18S
910500453336	Temperature 850 °C, duration 30 s	LED22S
910500453337	Temperature 850 °C, duration 30 s	LED34S
910500453338	Temperature 850 °C, duration 30 s	LED40S
910500453339	Temperature 850 °C, duration 30 s	LED60S
910500454298	Temperature 850 °C, duration 30 s	LED22S
910500454299	Temperature 850 °C, duration 30 s	LED40S
910500454301	Temperature 850 °C, duration 30 s	LED34S
910500454302	Temperature 850 °C, duration 30 s	LED60S
910500454303	Temperature 850 °C, duration 30 s	LED22S
910500454304	Temperature 850 °C, duration 30 s	LED40S
910500454305	Temperature 850 °C, duration 30 s	LED34S
910500454306	Temperature 850 °C, duration 30 s	LED60S

order code	Glow-wire test	Lamp family code
910500458243	Temperature 850 °C, duration 30 s	LED18S
910500458244	Temperature 850 °C, duration 30 s	LED22S
910500458245	Temperature 850 °C, duration 30 s	LED34S
910500458246	Temperature 850 °C, duration 30 s	LED40S
910500458247	Temperature 850 °C, duration 30 s	LED60S
910500458248	Temperature 850 °C, duration 30 s	LED22S
910500458249	Temperature 850 °C, duration 30 s	LED40S
910500458250	Temperature 850 °C, duration 30 s	LED34S
910500458251	Temperature 850 °C, duration 30 s	LED60S
910500458794	Temperature 850 °C, duration 5 s	LED22S
910500458795	Temperature 850 °C, duration 5 s	LED34S
910500458796	Temperature 850 °C, duration 5 s	LED40S
910500458797	Temperature 850 °C, duration 5 s	LED60S

### Initial Performance (IEC Compliant)

order code	Initial chromaticity	Initial LED luminaire efficacy	Initial luminous flux	Initial input power
910500453335	(0.38, 0.38) SDCM ~LT~3.5	106 lm/W	1800 lm	17 W
910500453336	(0.38, 0.38) SDCM ~LT~3.5	110 lm/W	2200 lm	20 W
910500453337	(0.38, 0.38) SDCM ~LT~3.5	117 lm/W	3400 lm	29 W
910500453338	(0.38, 0.38) SDCM ~LT~3.5	105 lm/W	4000 lm	38 W
910500453339	(0.38, 0.38) SDCM ~LT~3.5	105 lm/W	6000 lm	57 W
910500454298	(0.38, 0.38) SDCM ~LT~3.5	110 lm/W	2200 lm	20 W
910500454299	(0.38, 0.38) SDCM ~LT~3.5	105 lm/W	4000 lm	38 W
910500454301	(0.38, 0.38) SDCM ~LT~3.5	117 lm/W	3400 lm	29 W
910500454302	(0.38, 0.38) SDCM ~LT~3.5	105 lm/W	6000 lm	57 W
910500454303	(0.38, 0.38) SDCM ~LT~3.5	110 lm/W	2200 lm	20 W
910500454304	(0.38, 0.38) SDCM ~LT~3.5	105 lm/W	4000 lm	38 W
910500454305	(0.38, 0.38) SDCM ~LT~3.5	117 lm/W	3400 lm	29 W
910500454306	(0.38, 0.38) SDCM ~LT~3.5	105 lm/W	6000 lm	57 W

order code	Initial chromaticity	Initial LED luminaire efficacy	Initial luminous flux	Initial input power
910500458243	(0.38, 0.38) SDCM ~LT~3.5	106 lm/W	1800 lm	17 W
910500458244	(0.38, 0.38) SDCM ~LT~3.5	110 lm/W	2200 lm	20 W
910500458245	(0.38, 0.38) SDCM ~LT~3.5	117 lm/W	3400 lm	29 W
910500458246	(0.38, 0.38) SDCM ~LT~3.5	105 lm/W	4000 lm	38 W
910500458247	(0.38, 0.38) SDCM ~LT~3.5	105 lm/W	6000 lm	57 W
910500458248	(0.38, 0.38) SDCM ~LT~3.5	110 lm/W	2200 lm	20 W
910500458249	(0.38, 0.38) SDCM ~LT~3.5	105 lm/W	4000 lm	38 W
910500458250	(0.38, 0.38) SDCM ~LT~3.5	117 lm/W	3400 lm	29 W
910500458251	(0.38, 0.38) SDCM ~LT~3.5	105 lm/W	6000 lm	57 W
910500458794	(0.38, 0.38) SDCM ~LT~3.6	110 lm/W	2200 lm	20 W
910500458795	(0.38, 0.38) SDCM ~LT~3.7	117 lm/W	3400 lm	29 W
910500458796	(0.38, 0.38) SDCM ~LT~3.8	105 lm/W	4000 lm	38 W
910500458797	(0.38, 0.38) SDCM ~LT~3.9	105 lm/W	6000 lm	57 W

